



UCEL Bellows & Boots



Rubber spare parts represent a big part of our specialty at UCEL. The rubber compounds are studied and developed meticulously to serve different applications and provide better solutions to the drivers all around the world.

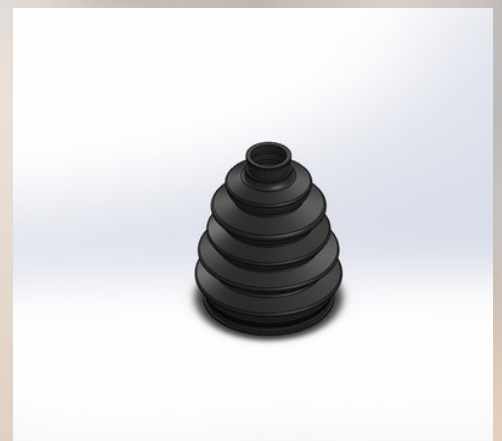
The rubber compounds are essential to the quality of the rubber to metal spare part whether it's EPDM, SBR, NR, NBR, CR, VMQ or other compounds.

UCEL's rubber bellows and boots proved to be effectively performant on the road in the Turkish and international market. And this performance is tested way before our bellows and boots are put out in the market. Our testing technology ensures the quality of the rubber and the performance of the parts.

• Compton :

Rubber parts and rubber to metal spare parts are complex products that are designed to serve specific applications on the car. The rubber compounding represents a crucial phase in the production process, given that the choice of the type of rubber affects directly the performance the part. UCEL's bellows & boots are composed generally of the following elements, depending on the application:

- Natural Rubber, Isoprene, NR
- Nitrile, Buna-N, NBR
- Neoprene, Choloprene, CR





UCEL Bellows & Boots



Rubber bellows & boots are required in different industrial applications with a focus on automotive applications. These rubber parts are destined to protect other components from a variety of deterioration elements to ensure their performance in certain conditions.

These parts are characterized by flexibility and a long lifespan which serves in the protection of products that are in constant motion inside the car. These are, generally, the elements that characterize the applications on rubber bellows and boots:

- Dust
- Water
- Other elements

